

Dartron

Issuing Entity:
Dartron Industries, Inc
P. O. Box 13114
Salem, Oregon 97309
Phone: 503-362-2341
Fax: 503-362-2536

www.dartronrides.com

Bulletin # BU-4629

Release Date: 6-29-1994

Effective Date: 6-29-1994

Supersedes: None

Completion Date:

Page 1 of 5

SAFETY BULLETIN

Ride Manufacturer: Dartron Industries, Inc.

Affected Production Dates: 1993-1994

Ride Name: StarTrooper

Affected Serial #'s: 402111-5S, 311191-5S, 311171-5S,
310261-5S

Model #'s: All

Abstract of Issue: StarTrooper Electrical Change

Reason for release: Under certain circumstances i.e. ambient temperatures, solar load, heat build up from electrical components, temperatures in the center ornament can cause deterioration of fuses, circuit breakers, transformers etc. We recommend that the following procedures be used to install a cooling system designed to reduce inside ornament temperatures.

Parts Required:

- 1 Fan motor Assembly
- 1 4" flexible ducting 8: LG
- 4 4" hose clamps
- 1 1/2" CGB Connector
- 1 1/2" CGB Lock Washers
- 8 1/4-20 x 1/2" hex head cap screws
- 8 1/4" Lock-washers
- 2 Louvered vent kits
- 3 8-32 Phillips-head machine screws

Installation Instructions for StarTrooper Center Ornament Cooling Fan:

- 1 Disconnect power to center ornament.
- 2 Remove ornament panels.
- 3 Remove upper ballasts located in structural channels above and to sides of the electrical control panels (fig 1).

Installation Instructions for StarTrooper Center Ornament Cooling Fan Cont:

4. Fit fan motor housing assembly to structural channels with fan housing above lighting panel. Position as in (fig 1) and clamp in place.
5. Drill and tap holes to mount fan motor assembly drill size 13/64 tap ¼-20.
6. Mount fan motor assembly with supplied bolts.
7. Drill and tap holes in structural channels for ducting mounting clamps (1/8 drill 8/32 tap) secure ducting to exhaust vent, attach to clamps on structural channel and run end of duct out bottom ornament.
8. Drill 7/8" hole in right side of lighting control panel as shown in (fig 2) for CGB connector.
9. Wire in fan motor to lighting panel downstream of fuse or circuit breaker.
10. Locate position for vents on lighting control panel both right and left sides making sure there are no obstructions inside panel. Using supplied templates mark and drill holes in panel (fig 2 & 3)
11. Replace upper ballasts.
12. Restore power to center ornament.
13. Check fan operation.
14. Replace ornament panels.

BULLETIN #4629

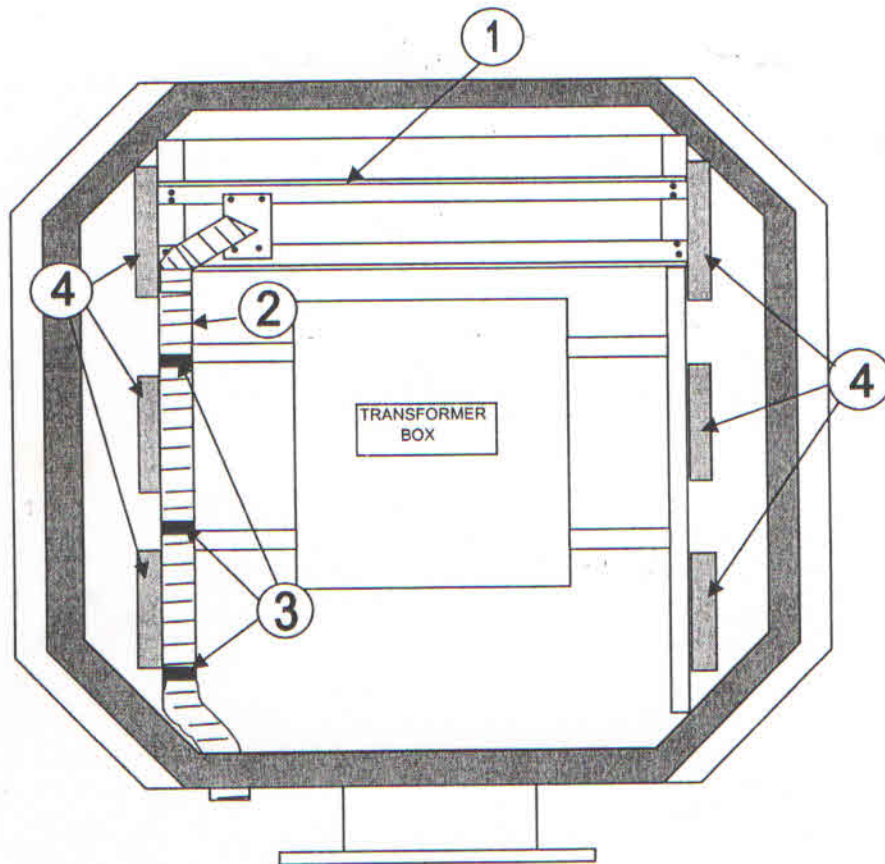
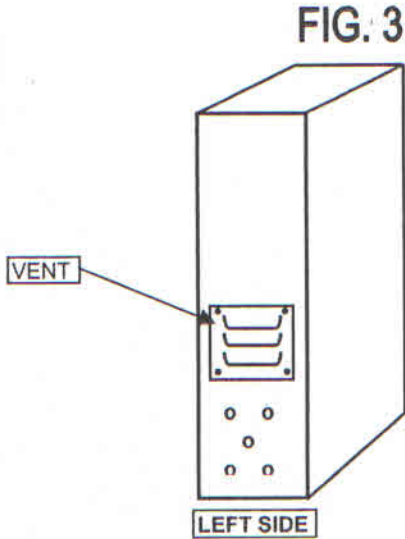
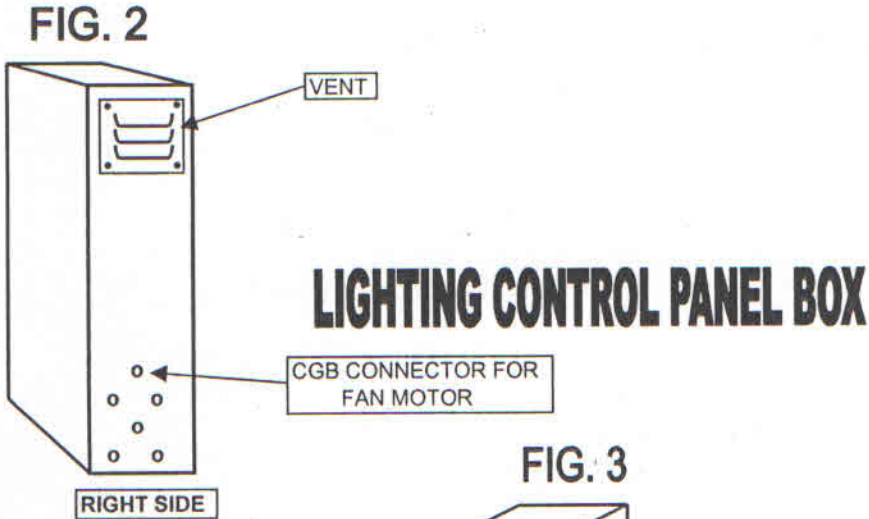


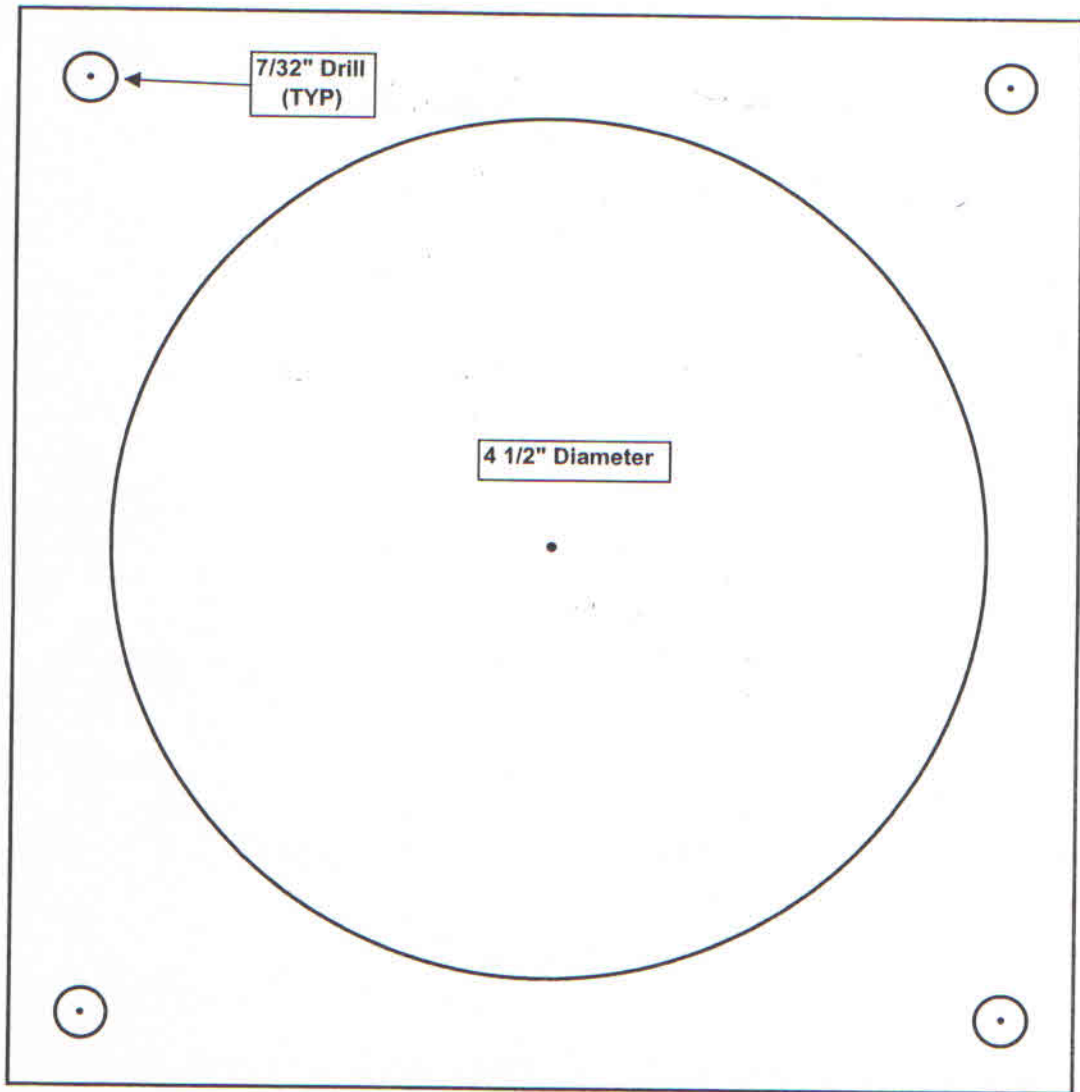
FIG. 1

- 1. FAN MOTOR ASSEMBLY
- 2. DUCTING
- 3. CLAMPS
- 4. BALLASTS

BULLETIN #4629



BULLETIN #4629



LOUVERED VENT TEMPLATE